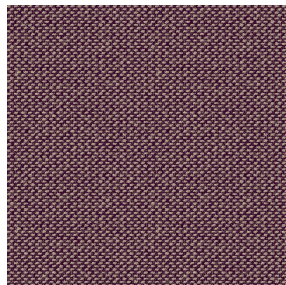




NORA Gris envers blanc 63
Support d'impression



METIS Chaudron 118
Motif d'impression



Visuel ne prenant pas en compte le support d'impression, le rendu final pouvant varier en fonction du support choisi.

Support d'impression **NORA Gris envers blanc 63** Motif d'impression **METIS Chaudron 118**

Support occultant pour impression, imprimable des 2 côtés dont un texturé.

Propriétés techniques

Applications Store bateau - Parois japonaises - Rideaux

Composition Polyester/acrylique

Poids 380 g/m²

Laize 280 cm

Sens Contre sens

Raccord ↔ 0,0 cm ↓ 0,0 cm

Conseils d'entretien     

Label

Minimum commande 25 mètre(s) linéaire(s)

Caractéristiques techniques

Résistance

Stabilité dimensionnelle (%)

Chaîne -0,5

Trame -0,5

Allongement rupture (mm)

Chaîne 28

Trame 12

Résistance rupture (daN)

Chaîne 140

Trame 57

Motif d'impression METIS



METIS Gentiane 16



METIS Absinthe 132



METIS Noir 10



METIS Citrouille 136



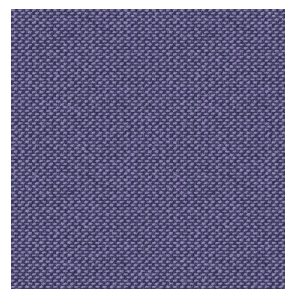
METIS Chanvre 72



METIS Gris 97



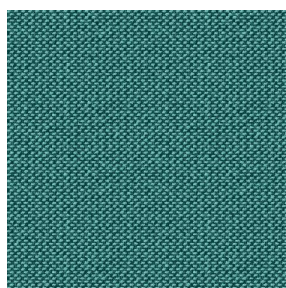
METIS Bergamote 121



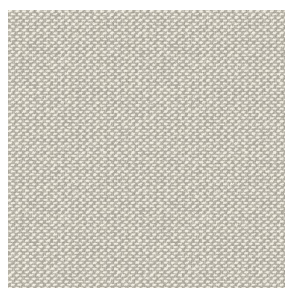
METIS Violine 105



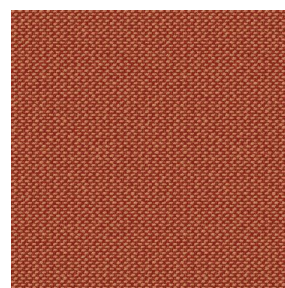
METIS Perle 96



METIS Céladon 135



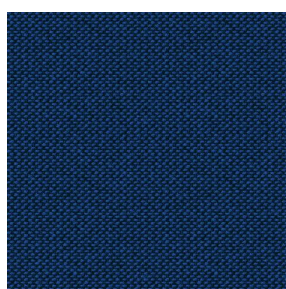
METIS Lin 11



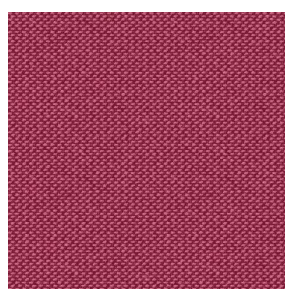
METIS Sienne 29



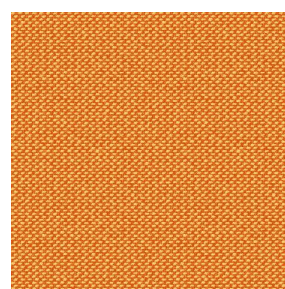
METIS Lagon 110



METIS Cobalt 114



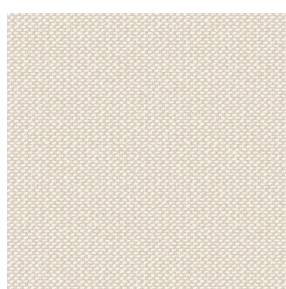
METIS Framboise 81



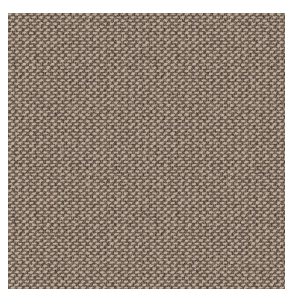
METIS Abricot 08



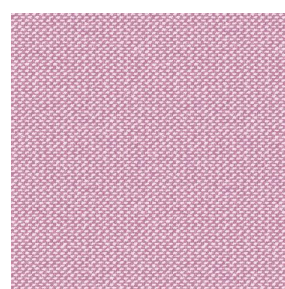
METIS Chamois 111



METIS Ivoire 115



METIS Ficelle 09



METIS Rose 129



(Headquarters) SOTEXPRO - 510 route de Montchal - 42360 PANISSIÈRES - FRANCE - +33 4 77 27 60 60
(Showroom) Le LAB' SOTEXPRO - 4 rue du Mail - 75002 PARIS - FRANCE

Non-contractual photos and colors - Indicative fitting - Fitting may vary depending on support selected

Motif d'impression METIS



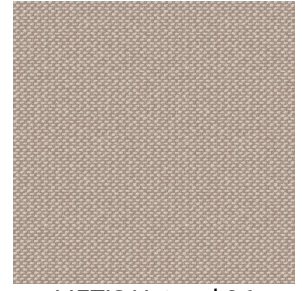
METIS Parme 79



METIS Cactus 36



METIS Hortensia 134



METIS Naturel 26



(Headquarters) SOTEXPRO - 510 route de Montchal - 42360 PANISSIÈRES - FRANCE - +33 4 77 27 60 60
(Showroom) Le LAB' SOTEXPRO - 4 rue du Mail - 75002 PARIS - FRANCE

Non-contractual photos and colors - Indicative fitting - Fitting may vary depending on support selected