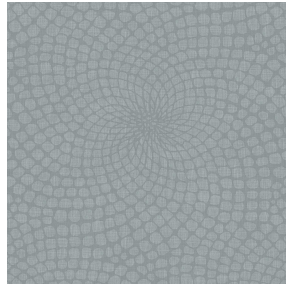


**NOSUN BPI 00**  
Support d'impression



**MELODY Acier 18**  
Motif d'impression



## Support d'impression **NOSUN BPI 00** Motif d'impression **MELODY Acier 18**

Support pour impression effet natté reliéé occultant grâce à son envers floqué acrylique blanc

### Propriétés techniques

**Applications** Store bateau - Parois japonaises - Rideaux


**Composition** Polyester/acrylique

**Poids** 400 g/m<sup>2</sup>

**Laize** 280 cm

**Sens** Contre sens

**Raccord** ↔ 0.0 cm ↓ 0.0 cm

**Conseils d'entretien**     

**Label**

**Minimum commande** 25 mètre(s) linéaire(s)



Visuel ne prenant pas en compte le support d'impression, le rendu final pouvant varier en fonction du support choisi.

## Caractéristiques techniques

### Résistance

### Stabilité dimensionnelle (%)

Chaîne **0**

Trame **0**

### Allongement rupture (mm)

Chaîne **40**

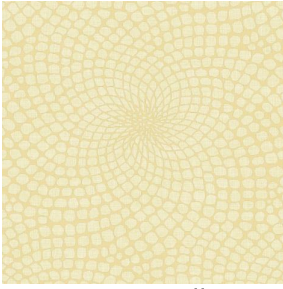
Trame **32**

### Résistance rupture (daN)

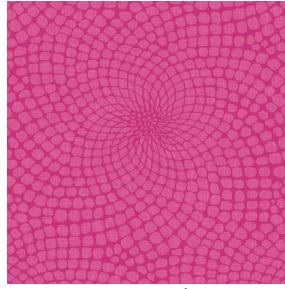
Chaîne **190**

Trame **93**

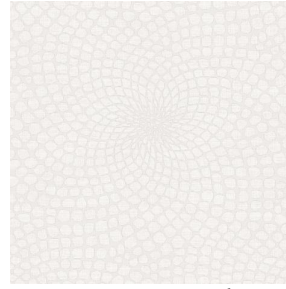
# Motif d'impression MELODY



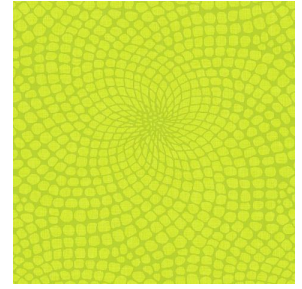
MELODY Vanille 51



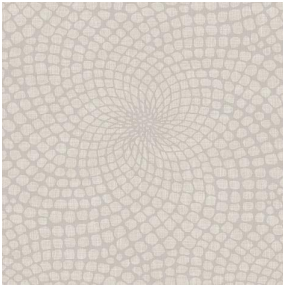
MELODY Fuchsia 33



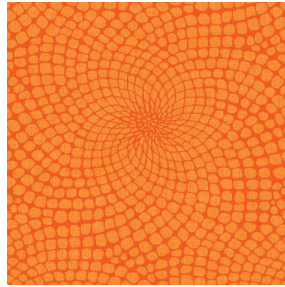
MELODY Naturel 26



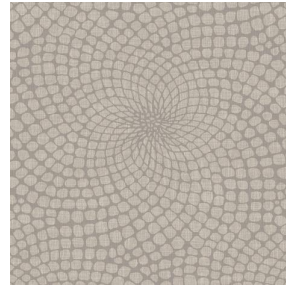
MELODY Anis 62



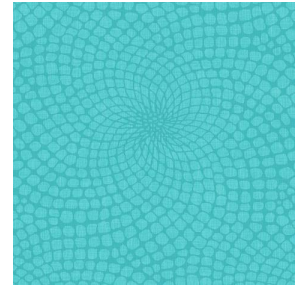
MELODY Lin 11



MELODY Orange 15



MELODY Ficelle 09



MELODY Turquoise 53



(Headquarters) SOTEXPRO - 510 route de Montchal - 42360 PANISSIÈRES - FRANCE - +33 4 77 27 60 60  
(Showroom) Le LAB' SOTEXPRO - 4 rue du Mail - 75002 PARIS - FRANCE

Non-contractual photos and colors - Indicative fitting - Fitting may vary depending on support selected