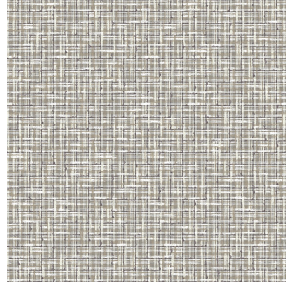




**SATIN BPI 00**  
Support d'impression



**SALIN Naturel 26**  
Motif d'impression



# Support d'impression **SATIN BPI 00** Motif d'impression **SALIN Naturel 26**

Support pare-soleil pour impression numérique.

## Propriétés techniques



Non feu

**Applications** Store bateau - Parois japonaises - Rideaux



**Composition** 100% polyester FR

**Poids** 220 g/m<sup>2</sup>

**Laize** 280 cm

**Sens** Contre sens

**Raccord** ↔ 0.0 cm ↓ 0.0 cm

**Conseils d'entretien**     

**Label** France Terre Textile / OEKO-TEX STANDARD 100

**Minimum commande** 25 mètre(s) linéaire(s)



Visuel ne prenant pas en compte le support d'impression, le rendu final pouvant varier en fonction du support choisi.

## Caractéristiques techniques

Non feu

M1 / B1 / IMO PASS

Résistance

Stabilité dimensionnelle (%)

Chaîne -1

Trame -1

Allongement rupture (mm)

Chaîne 42

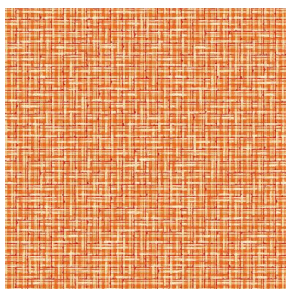
Trame 22

Résistance rupture (daN)

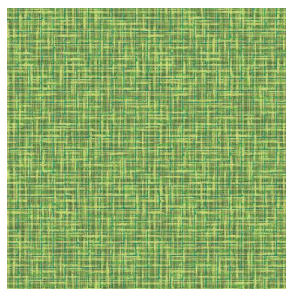
Chaîne 160

Trame 140

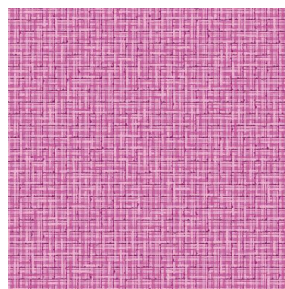
## Motif d'impression SALIN



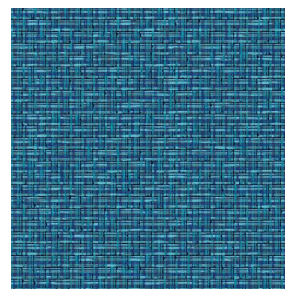
SALIN Abricot 08



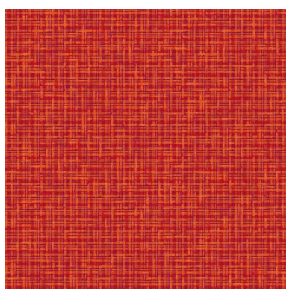
SALIN Anis 62



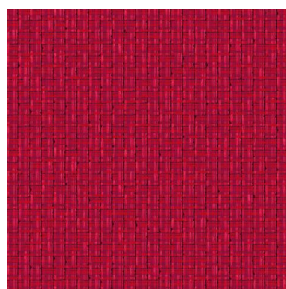
SALIN Fuchsia 33



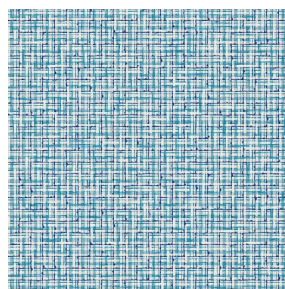
SALIN Océan 91



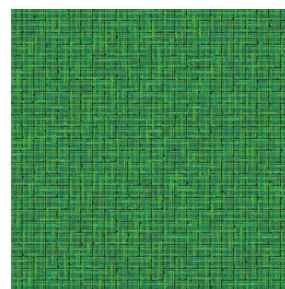
SALIN Orange 15



SALIN Rouge 21



SALIN Turquoise 53



SALIN Vert 24



(Headquarters) SOTEXPRO - 510 route de Montchal - 42360 PANISSIÈRES - FRANCE - +33 4 77 27 60 60  
(Showroom) Le LAB' SOTEXPRO - 4 rue du Mail - 75002 PARIS - FRANCE

*Non-contractual photos and colors - Indicative fitting - Fitting may vary depending on support selected*