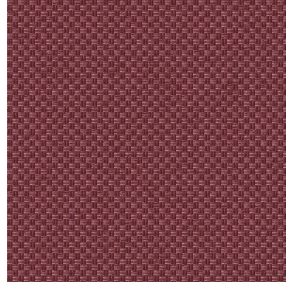


**SIENTO RECYCLE UNI**  
Naturel 26  
Support d'impression



**CHARLOTTE Chaudron 118**  
Motif d'impression



Visuel ne prenant pas en compte le support d'impression, le rendu final pouvant varier en fonction du support choisi.



## Support d'impression **SIENTO** **RECYCLE UNI Naturel 26** Motif d'impression **CHARLOTTE** **Chaudron 118**

Naté lourd, le Siento Recyclé est tissé avec des fils teints mélangés ce qui lui confère cet aspect rustique et chiné. La chaîne et la trame sont en polyester FR recyclé. Tissu utilisable en support d'impression, attention le fond a une incidence sur le rendu coloristique du dessin

### Propriétés techniques



Non feu



Thermique



Acoustique



Tissus recyclés

**Applications** Store bateau - Parois japonaises - Couvre lit - Cache sommier - Siège - Chemins de lit - Rideaux - Coussin

**Composition** 80% polyester FR recyclé / 20% polyester FR

**Poids** 330 g/m<sup>2</sup>

**Laize** 290 cm

**Sens** Contre sens ou sens normal

**Raccord** ↔ 0,0 cm ↓ 0,0 cm

**Conseils d'entretien**

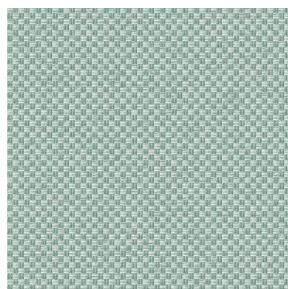
**Label** France Terre Textile / OEKO-TEX STANDARD 100 Recyclé

**Minimum commande** 25 mètre(s) linéaire(s)

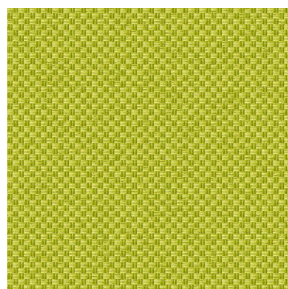
## Caractéristiques techniques

Non feu	M1 / B1 / IMO PASS / UNI 8456 / 9174 Classe Uno
Acoustique	Coeff. moyen de réduction sonore (NRC) : <b>0.73</b>
Indices optiques	Réflexion lumière : <b>52 %</b>
	Absorption lumière : <b>40 %</b>
	Transmission lumière : <b>8 %</b>
Indices thermiques	réflexion solaire : <b>61 %</b>
	absorption solaire : <b>24 %</b>
	Transmission solaire : <b>15 %</b>
	Transmission UV : <b>3 %</b>
	Gtot : <b>Gt 37 % Fc 63 %</b>
Résistance	Solidité lumière (unités Class/8) <b>6</b>
	Boulochage <b>4-5</b>
	Stabilité dimensionnelle (%)
	Chaîne <b>-1,5</b>
	Trame <b>-1,5</b>
	Martindale (Cycles) <b>90000</b>
	Allongement rupture (mm)
	Chaîne <b>41</b>
	Trame <b>44</b>
	Résistance rupture (daN)
	Chaîne <b>180</b>
Trame <b>150</b>	

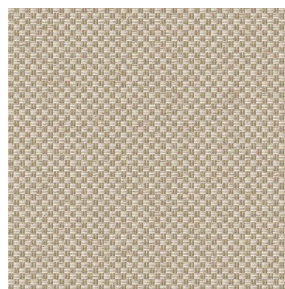
# Motif d'impression CHARLOTTE



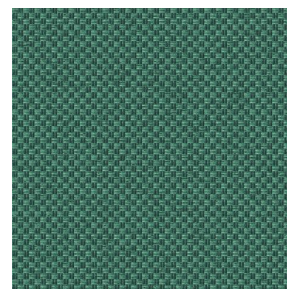
CHARLOTTE Absinthe  
132



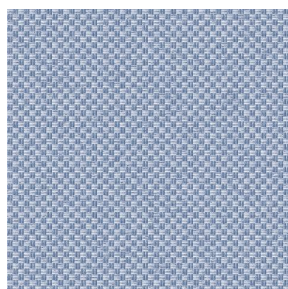
CHARLOTTE Anis 62



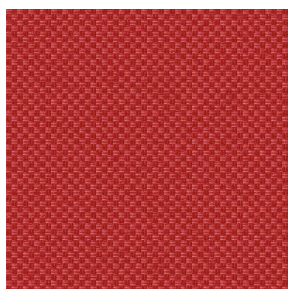
CHARLOTTE Beige 63



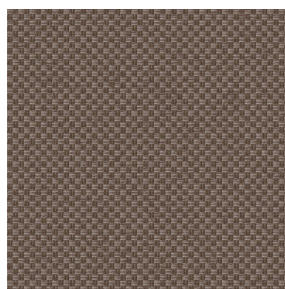
CHARLOTTE Bouteille  
101



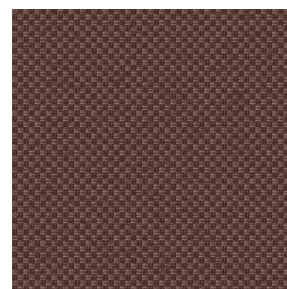
CHARLOTTE Brume 47



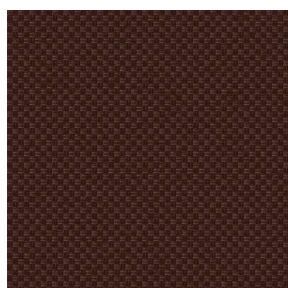
CHARLOTTE Cerise 66



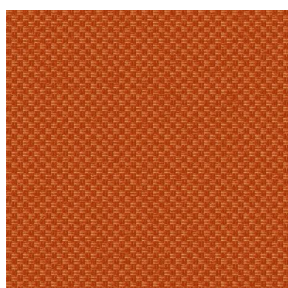
CHARLOTTE Chamois  
111



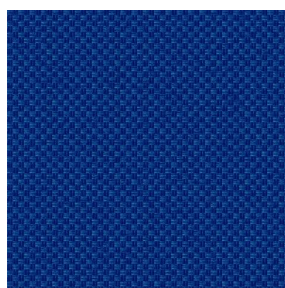
CHARLOTTE Chataigne  
55



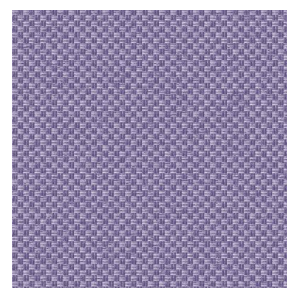
CHARLOTTE Chocolat  
70



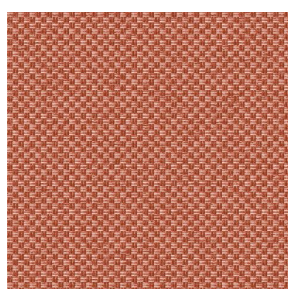
CHARLOTTE Citrouille  
136



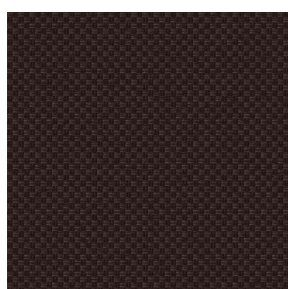
CHARLOTTE Cobalt 114



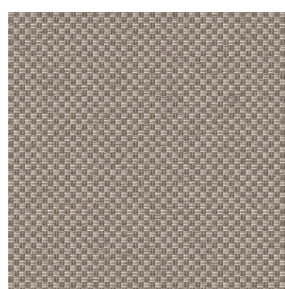
CHARLOTTE Crepuscule  
45



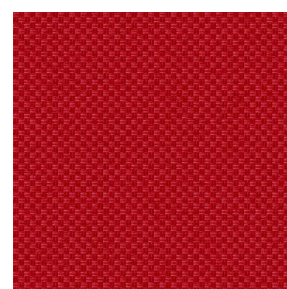
CHARLOTTE Cuivre 50



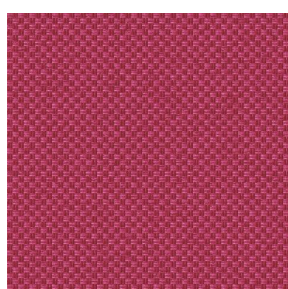
CHARLOTTE Ebene 124



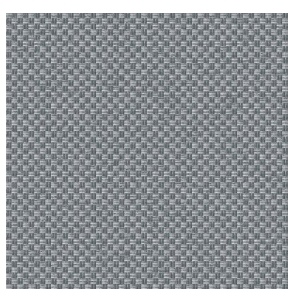
CHARLOTTE Ficelle 09



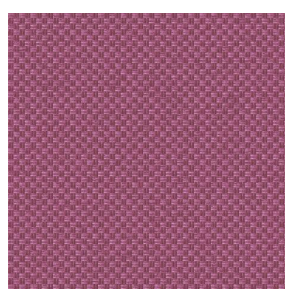
CHARLOTTE Fiesta 131



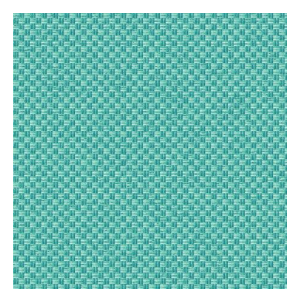
CHARLOTTE Grenat 56



CHARLOTTE Gris 97



CHARLOTTE Hortensia  
134



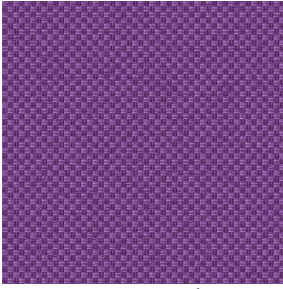
CHARLOTTE Lagon 110



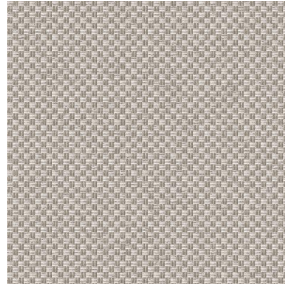
(Headquarters) SOTEXPRO - 510 route de Montchal - 42360 PANISSIÈRES - FRANCE - +33 4 77 27 60 60  
(Showroom) Le LAB' SOTEXPRO - 4 rue du Mail - 75002 PARIS - FRANCE

Non-contractual photos and colors - Indicative fitting - Fitting may vary depending on support selected

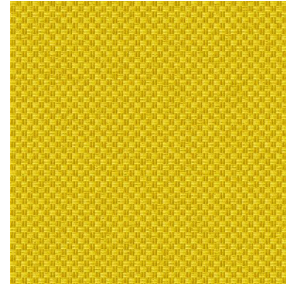
# Motif d'impression CHARLOTTE



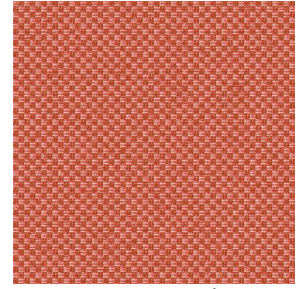
CHARLOTTE Lilas 19



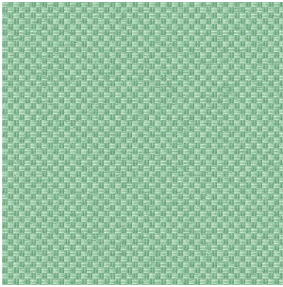
CHARLOTTE Lin 11



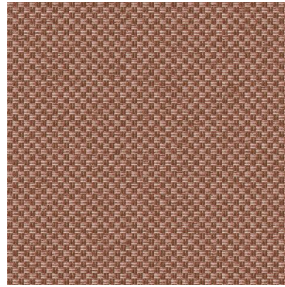
CHARLOTTE Maïs 37



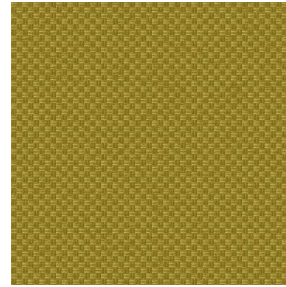
CHARLOTTE Melon 22



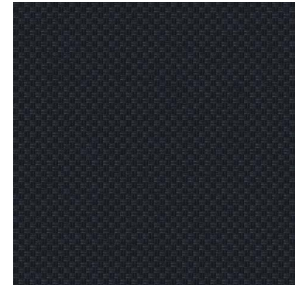
CHARLOTTE Menthe  
122



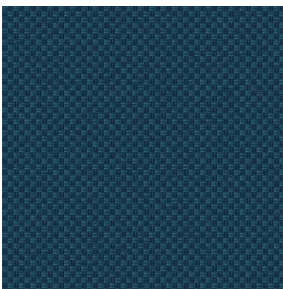
CHARLOTTE Mordore  
133



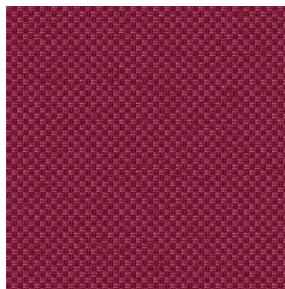
CHARLOTTE Mousse 92



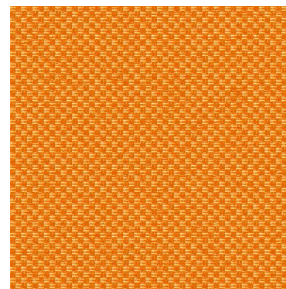
CHARLOTTE Noir 10



CHARLOTTE Océan 91



CHARLOTTE Opéra 104



CHARLOTTE Orange 15



CHARLOTTE Pacifique  
54



CHARLOTTE Prairie 125



CHARLOTTE Printemps  
130



CHARLOTTE Sienne 29



CHARLOTTE Souris 31



CHARLOTTE Terre 107



CHARLOTTE Tilleul 103



CHARLOTTE Vieux rose  
64



CHARLOTTE Violine 105



(Headquarters) SOTEXPRO - 510 route de Montchal - 42360 PANISSIÈRES - FRANCE - +33 4 77 27 60 60  
(Showroom) Le LAB' SOTEXPRO - 4 rue du Mail - 75002 PARIS - FRANCE

Non-contractual photos and colors - Indicative fitting - Fitting may vary depending on support selected