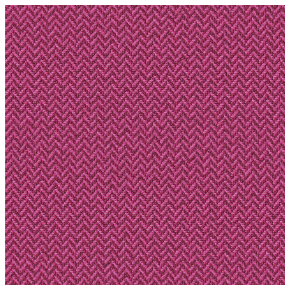




TAO BPI 00  
Support d'impression



SCOURTIN Hortensia 134  
Motif d'impression



## Support d'impression **TAO BPI 00** Motif d'impression **SCOURTIN Hortensia 134**

support d'impression velours non classé

Applications Store bateau - Parois japonaises - Rideaux

Composition 100 % polyester non classé

Poids 465 g/m<sup>2</sup>

Laize 132 cm

Sens Sens normal

Raccord ↔ cm ↓ cm

Conseils d'entretien     

Label

Minimum commande 25 mètre(s) linéaire(s)



Visuel ne prenant pas en compte le support d'impression, le rendu final pouvant varier en fonction du support choisi.

## Caractéristiques techniques

Résistance	Solidité lumière (unités Class/8)	5
	Boulochage	5
	Martindale (Cycles)	60000



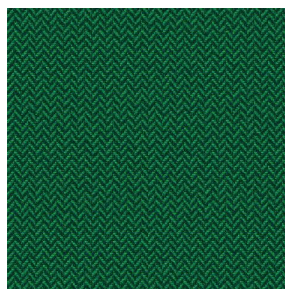
# Motif d'impression SCOURTIN



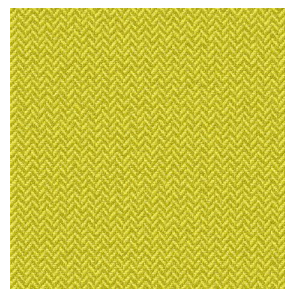
SCOURTIN Beige 63



SCOURTIN Fuchsia 33



SCOURTIN Sapin 126



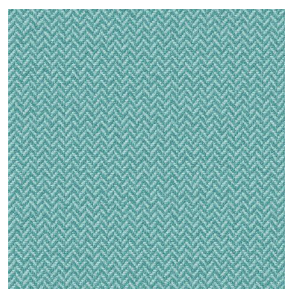
SCOURTIN Bergamote  
121



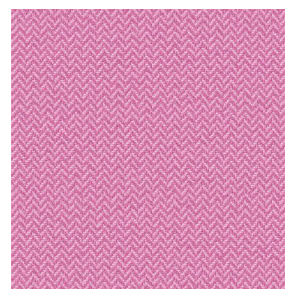
SCOURTIN Anthracite  
38



SCOURTIN Violine 105



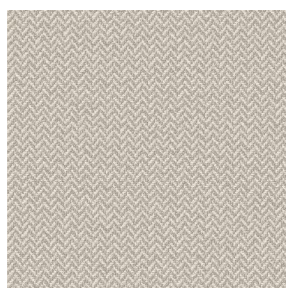
SCOURTIN Pacifique 54



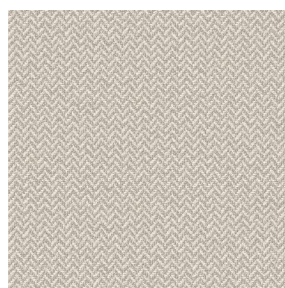
SCOURTIN Rose 129



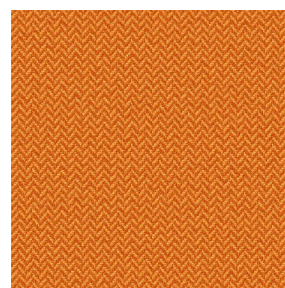
SCOURTIN Blanc 01



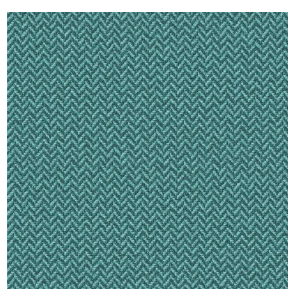
SCOURTIN Lin 11



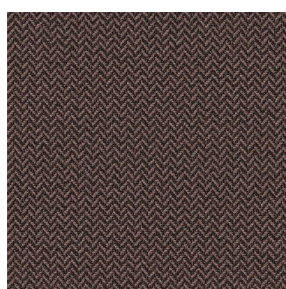
SCOURTIN Naturel 26



SCOURTIN Citrouille  
136



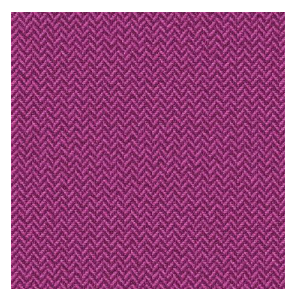
SCOURTIN Turquoise 53



SCOURTIN Brun 23



SCOURTIN Orage 123



SCOURTIN Rubis 59



SCOURTIN Ficelle 09



SCOURTIN Maïs 37



SCOURTIN Céladon 135



SCOURTIN Ebene 113



(Headquarters) SOTEXPRO - 510 route de Montchal - 42360 PANISSIÈRES - FRANCE - +33 4 77 27 60 60  
(Showroom) Le LAB' SOTEXPRO - 4 rue du Mail - 75002 PARIS - FRANCE

Non-contractual photos and colors - Indicative fitting - Fitting may vary depending on support selected



## Motif d'impression SCOURTIN



SCOURTIN Tourterelle  
138



SCOURTIN Titanium 98



SCOURTIN Lagon 110



SCOURTIN Gris 97



(Headquarters) SOTEXPRO - 510 route de Montchal - 42360 PANISSIÈRES - FRANCE - +33 4 77 27 60 60  
(Showroom) Le LAB' SOTEXPRO - 4 rue du Mail - 75002 PARIS - FRANCE

Non-contractual photos and colors - Indicative fitting - Fitting may vary depending on support selected