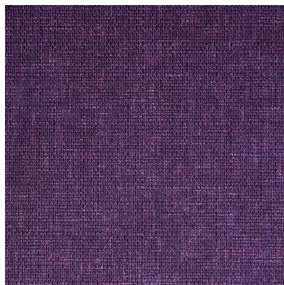
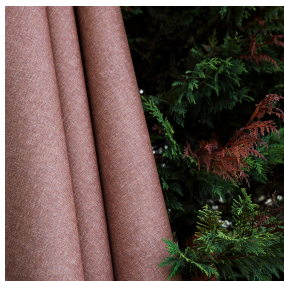
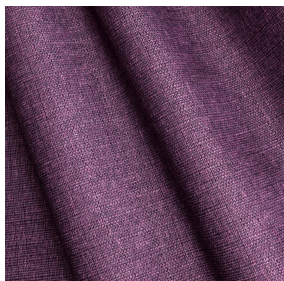


TAO BPI 00  
Support d'impression



MUNA Saphir 106  
Motif d'impression



## Support d'impression **TAO BPI 00** Motif d'impression **MUNA Saphir 106**

support d'impression velours non classé

**Applications** Store bateau - Parois japonaises - Rideaux

**Composition** 100 % polyester non classé

**Poids** 465 g/m<sup>2</sup>

**Laize** 132 cm

**Sens** Sens normal

**Raccord** ↔ cm ↓ cm

**Conseils d'entretien**     

**Label**

**Minimum commande** 25 mètre(s) linéaire(s)



Visuel ne prenant pas en compte le support d'impression, le rendu final pouvant varier en fonction du support choisi.

## Caractéristiques techniques

Résistance

Solidité lumière (unités Class/8)

5

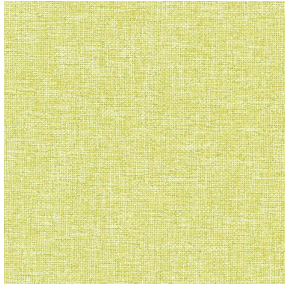
Boulochage

5

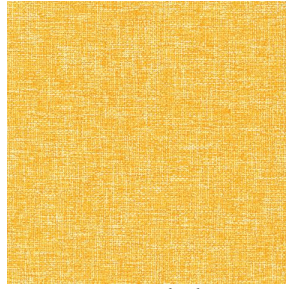
Martindale (Cycles)

60000

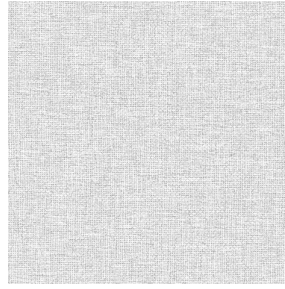
# Motif d'impression MUNA



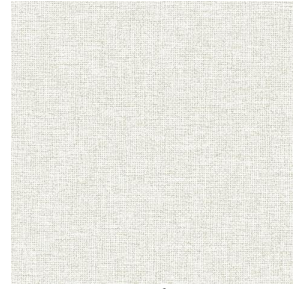
MUNA Cactus 36



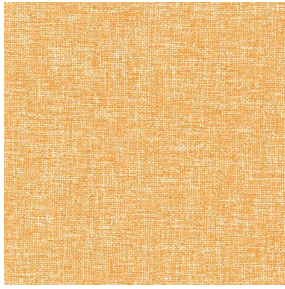
MUNA soleil 90



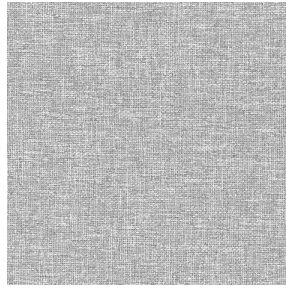
MUNA gris 97



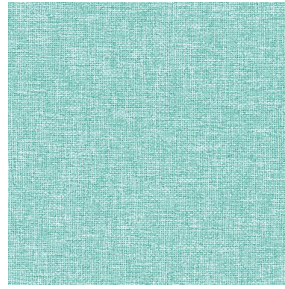
MUNA lin 11



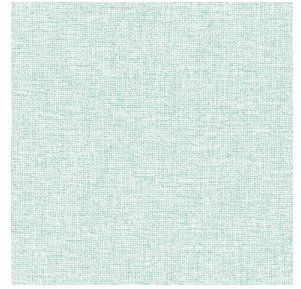
MUNA Melon 22



MUNA souris 31



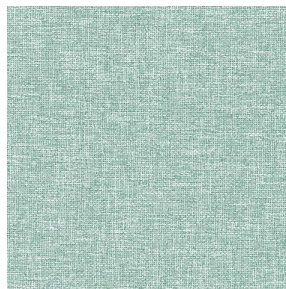
MUNA lagon 110



MUNA jade 116



MUNA terre 107



MUNA céladon 135



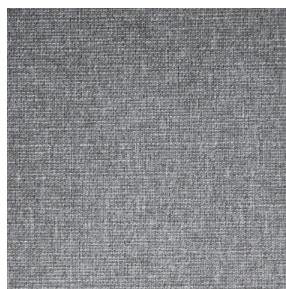
MUNA Coco 142



MUNA Sable 67



MUNA Saumon 143



MUNA Sisal 140



MUNA Tourterelle 138



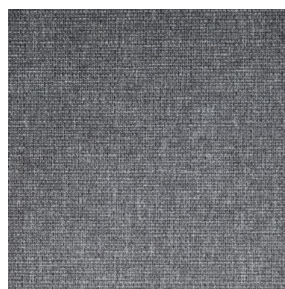
MUNA Ardoise 87



MUNA Tilleul 103



MUNA Chanvre 72



MUNA Graphite 77



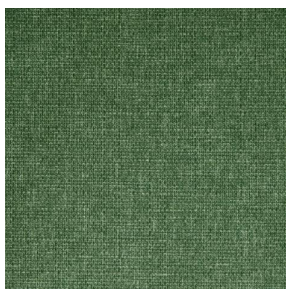
MUNA Olive 61



(Headquarters) SOTEXPRO - 510 route de Montchal - 42360 PANISSIÈRES - FRANCE - +33 4 77 27 60 60  
(Showroom) Le LAB' SOTEXPRO - 4 rue du Mail - 75002 PARIS - FRANCE

Non-contractual photos and colors - Indicative fitting - Fitting may vary depending on support selected

## Motif d'impression MUNA



MUNA Lierre 124



MUNA Indigo 144



MUNA Sienne 29



MUNA Rouge 21



MUNA Violine 105



MUNA Titanium 98



MUNA Acier 18



(Headquarters) SOTEXPRO - 510 route de Montchal - 42360 PANISSIÈRES - FRANCE - +33 4 77 27 60 60  
(Showroom) Le LAB' SOTEXPRO - 4 rue du Mail - 75002 PARIS - FRANCE

*Non-contractual photos and colors - Indicative fitting - Fitting may vary depending on support selected*