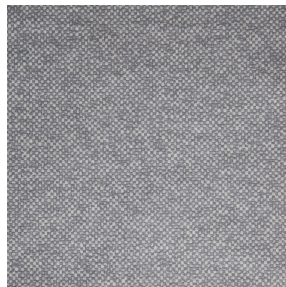
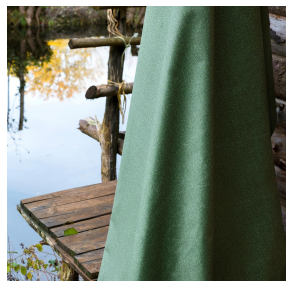


TAO BPI 00  
Support d'impression



ANATOLE lin 11  
Motif d'impression



## Support d'impression **TAO BPI 00** Motif d'impression **ANATOLE lin 11**

support d'impression velours non classé

**Applications** Store bateau - Parois japonaises - Rideaux

**Composition** 100 % polyester non classé

**Poids** 465 g/m<sup>2</sup>

**Laize** 132 cm

**Sens** Sens normal

**Raccord** ↔ cm ↓ cm

**Conseils d'entretien**     

**Label**

**Minimum commande** 25 mètre(s) linéaire(s)



Visuel ne prenant pas en compte le support d'impression, le rendu final pouvant varier en fonction du support choisi.

## Caractéristiques techniques

Résistance

Solidité lumière (unités Class/8)

5

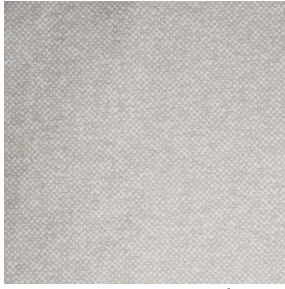
Boulochage

5

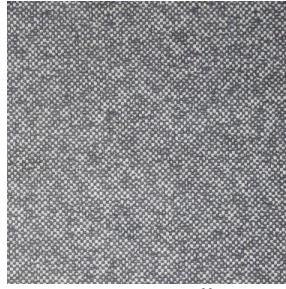
Martindale (Cycles)

60000

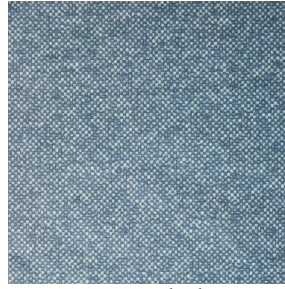
## Motif d'impression ANATOLE



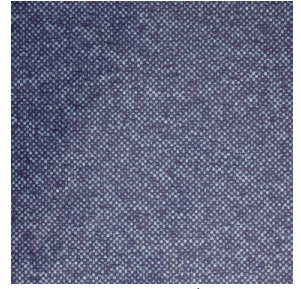
ANATOLE Naturel 26



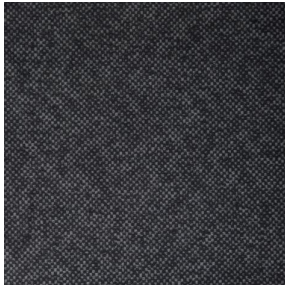
ANATOLE Ficelle 09



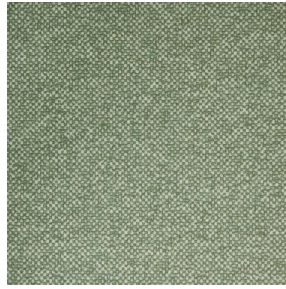
ANATOLE Celadon 135



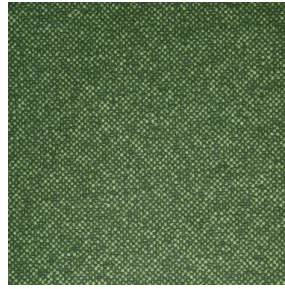
ANATOLE Océan 91



ANATOLE Titanium 98



ANATOLE Cactus 36



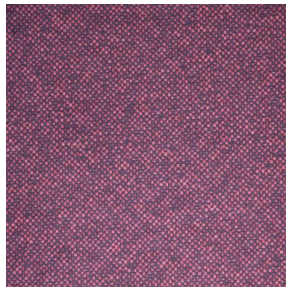
ANATOLE mousse 92



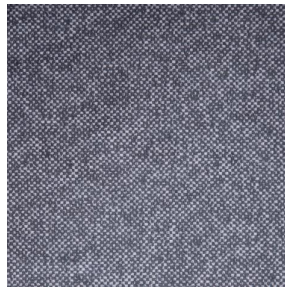
ANATOLE Or 94



ANATOLE Chaudron  
118



ANATOLE Amarante  
108



ANATOLE Taupe 95



(Headquarters) SOTEXPRO - 510 route de Montchal - 42360 PANISSIÈRES - FRANCE - +33 4 77 27 60 60  
(Showroom) Le LAB' SOTEXPRO - 4 rue du Mail - 75002 PARIS - FRANCE

Non-contractual photos and colors - Indicative fitting - Fitting may vary depending on support selected