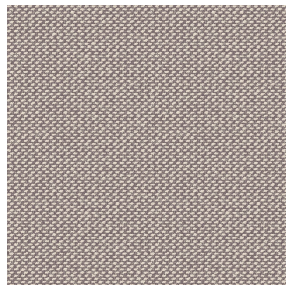
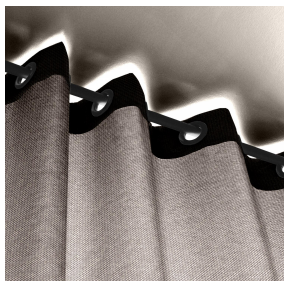




TAO BPI 00  
Support d'impression



METIS Chanvre 72  
Motif d'impression



## Support d'impression **TAO BPI 00** Motif d'impression **METIS Chanvre 72**

support d'impression velours non classé

**Applications** Store bateau - Parois japonaises - Rideaux

**Composition** 100 % polyester non classé

**Poids** 465 g/m<sup>2</sup>

**Laize** 132 cm

**Sens** Sens normal

**Raccord** ↔ 0,0 cm ↓ 0,0 cm

**Conseils d'entretien**     

**Label**

**Minimum commande** 25 mètre(s) linéaire(s)



Visuel ne prenant pas en compte le support d'impression, le rendu final pouvant varier en fonction du support choisi.

## Caractéristiques techniques

Résistance

Solidité lumière (unités Class/8)

5

Boulochage

5

Martindale (Cycles)

60000



# Motif d'impression METIS



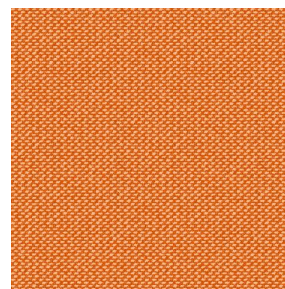
METIS Gentiane 16



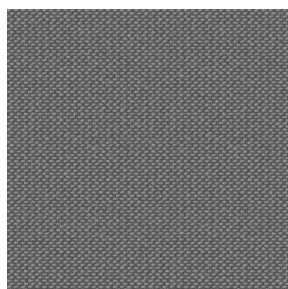
METIS Absinthe 132



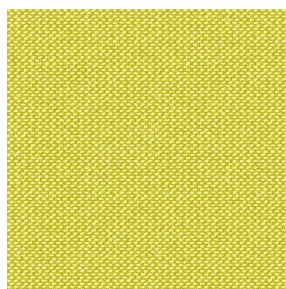
METIS Noir 10



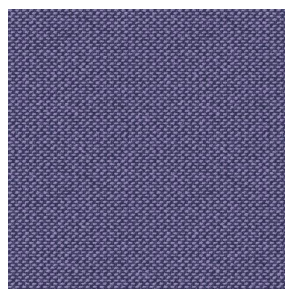
METIS Citrouille 136



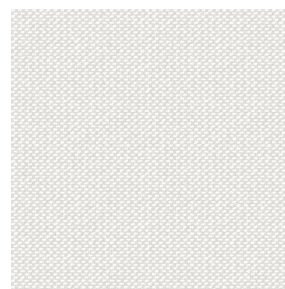
METIS Gris 97



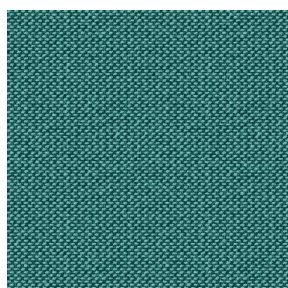
METIS Bergamote 121



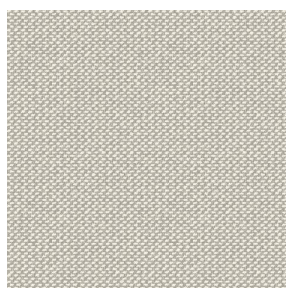
METIS Violine 105



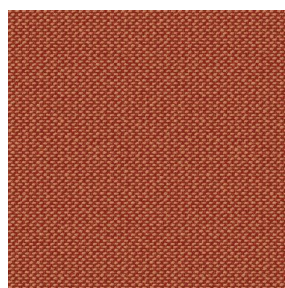
METIS Perle 96



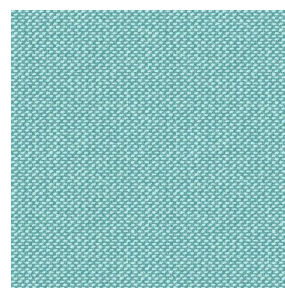
METIS Céladon 135



METIS Lin 11



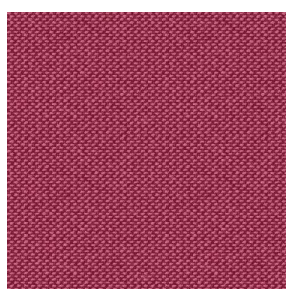
METIS Sienne 29



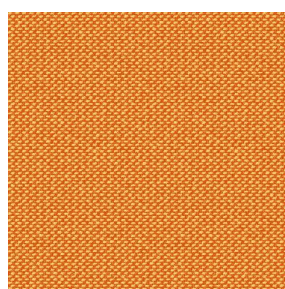
METIS Lagon 110



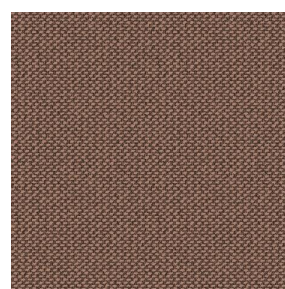
METIS Cobalt 114



METIS Framboise 81



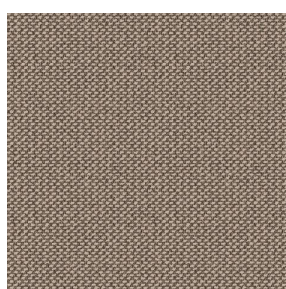
METIS Abricot 08



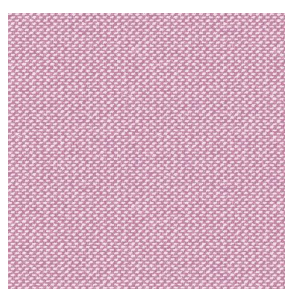
METIS Chamois 111



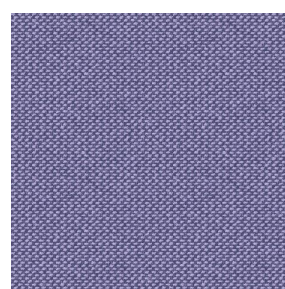
METIS Ivoire 115



METIS Ficelle 09



METIS Rose 129



METIS Parme 79



(Headquarters) SOTEXPRO - 510 route de Montchal - 42360 PANISSIÈRES - FRANCE - +33 4 77 27 60 60  
(Showroom) Le LAB' SOTEXPRO - 4 rue du Mail - 75002 PARIS - FRANCE

Non-contractual photos and colors - Indicative fitting - Fitting may vary depending on support selected



## Motif d'impression METIS



METIS Cactus 36



METIS Hortensia 134



METIS Naturel 26



METIS Chaudron 118



(Headquarters) SOTEXPRO - 510 route de Montchal - 42360 PANISSIÈRES - FRANCE - +33 4 77 27 60 60  
(Showroom) Le LAB' SOTEXPRO - 4 rue du Mail - 75002 PARIS - FRANCE

Non-contractual photos and colors - Indicative fitting - Fitting may vary depending on support selected