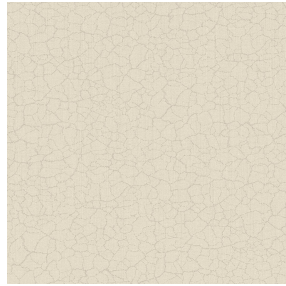




VEGA 00 BPI 00
Support d'impression



TERRA Chanvre 72
Motif d'impression



Support d'impression **VEGA 00 BPI 00** Motif d'impression **TERRA Chanvre 72**

support d'impression occultant aspect velours

Propriétés techniques



Non feu

Applications Store bateau - Parois japonaises - Rideaux

Composition 100 % polyester/acrylique envers floqué blanc

Poids 390 g/m²

Laize 260 cm

Sens Contre sens

Raccord ↔ 0.0 cm ↓ 0.0 cm

Conseils d'entretien     

Label

Minimum commande 25 mètre(s) linéaire(s)



Visuel ne prenant pas en compte le support d'impression, le rendu final pouvant varier en fonction du support choisi.

Caractéristiques techniques

Non feu

EN13773 : 2003 Class 1 / BS 5867 TYPE B / B1 / IMO PASS

Résistance

Solidité lumière (unités Class/8)	4
Stabilité dimensionnelle (%)	
Chaîne	-1
Trame	0
Allongement rupture (mm)	
Chaîne	69
Trame	106
Résistance rupture (daN)	
Chaîne	52
Trame	41

Motif d'impression TERRA



TERRA Ficelle 09



TERRA Taupe 95



TERRA Ecume 82



TERRA Rose 129



TERRA Fusain 71



TERRA Brun 23



TERRA Hortensia 134



TERRA Naturel 26



TERRA Anis 62



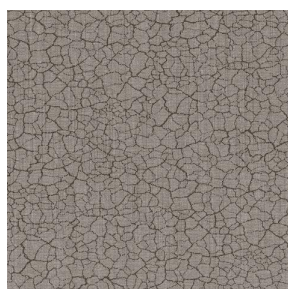
TERRA Lagon 110



TERRA Citrouille 136



TERRA Pacifique 54



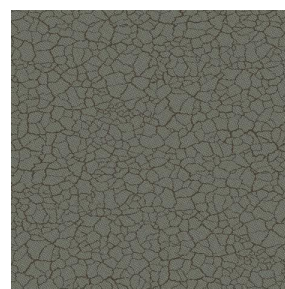
TERRA Chamois 111



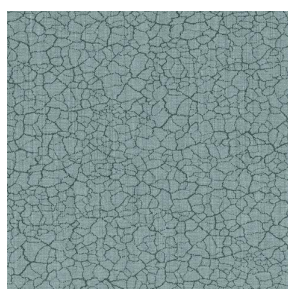
TERRA Titanium 98



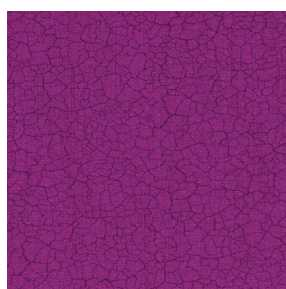
TERRA Graphite 77



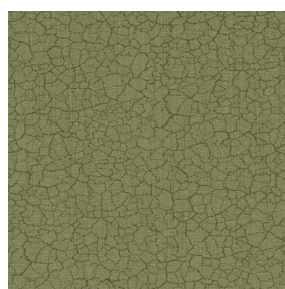
TERRA Gris 97



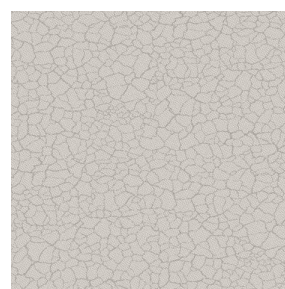
TERRA Ardoise 87



TERRA Violine 105



TERRA Argile 85



TERRA Lin 11



(Headquarters) SOTEXPRO - 510 route de Montchal - 42360 PANISSIÈRES - FRANCE - +33 4 77 27 60 60
(Showroom) Le LAB' SOTEXPRO - 4 rue du Mail - 75002 PARIS - FRANCE

Non-contractual photos and colors - Indicative fitting - Fitting may vary depending on support selected

Motif d'impression TERRA



TERRA Genêt 06



TERRA Céladon 135



TERRA Ebène 113



TERRA Ocre 03



(Headquarters) SOTEXPRO - 510 route de Montchal - 42360 PANISSIÈRES - FRANCE - +33 4 77 27 60 60
(Showroom) Le LAB' SOTEXPRO - 4 rue du Mail - 75002 PARIS - FRANCE

Non-contractual photos and colors - Indicative fitting - Fitting may vary depending on support selected