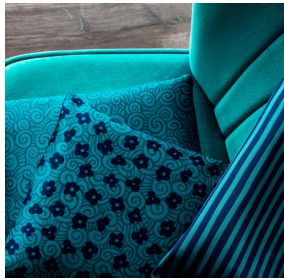


VELTEN BPI 00
Support d'impression



SONG Sanguine 05
Motif d'impression



Support d'impression **VELTEN BPI 00** Motif d'impression **SONG Sanguine 05**

support d'impression VELOURS enduction acrylique non classé au feu

Propriétés techniques

Applications Store bateau - Parois japonaises - Rideaux

Composition 100 % polyester/acrylique envers floqué blanc sans classement

Poids 390 g/m²

Laize 260 cm

Sens Sens normal

Raccord ↔ 35.0 cm ↓ 35.0 cm

Conseils d'entretien     

Label

Minimum commande 25 mètre(s) linéaire(s)



Visuel ne prenant pas en compte le support d'impression, le rendu final pouvant varier en fonction du support choisi.

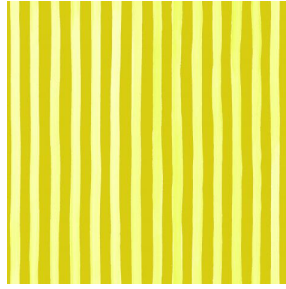
Caractéristiques techniques

Résistance	Solidité lumière (unités Class/8)	4
	Stabilité dimensionnelle (%)	
	Chaîne	-1
	Trame	0
	Allongement rupture (mm)	
	Chaîne	69
	Trame	106
	Résistance rupture (daN)	
	Chaîne	52
	Trame	41

Motif d'impression SONG



SONG Opéra 104



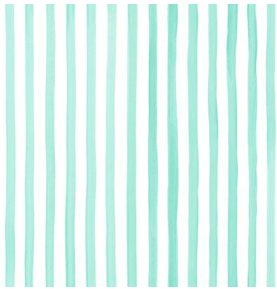
SONG Agrume 69



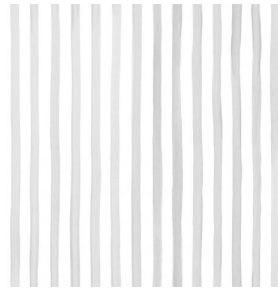
SONG Framboise 81



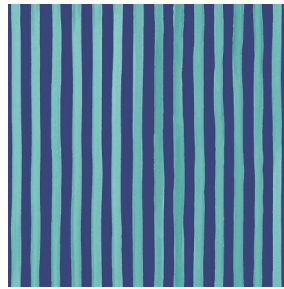
SONG Lierre 124



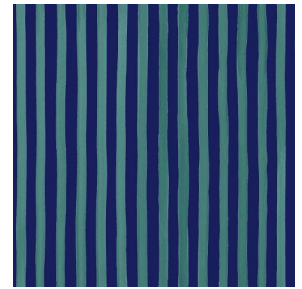
SONG Menthe 122



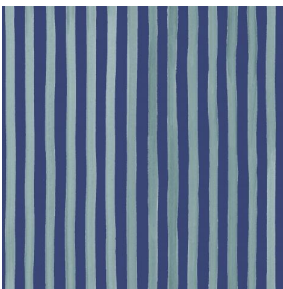
SONG Naturel 26



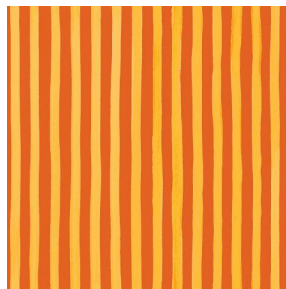
SONG Navy 120



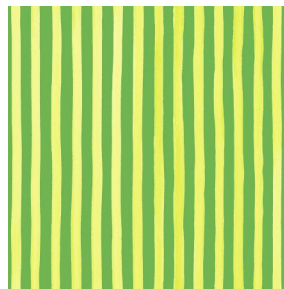
SONG Océan 91



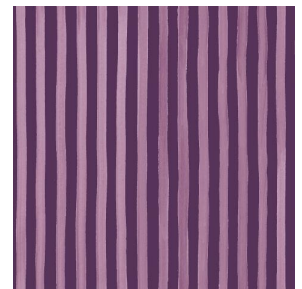
SONG Orage 123



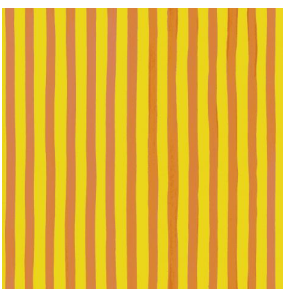
SONG Orange 15



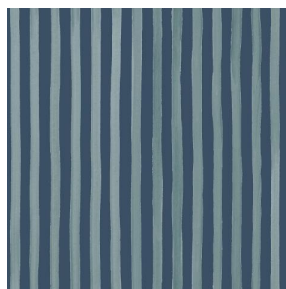
SONG Prairie 125



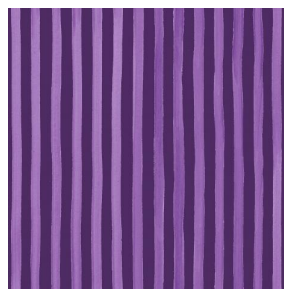
SONG Prune 84



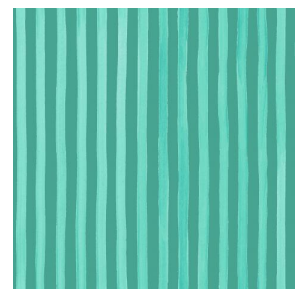
SONG Soleil 127



SONG Titanium 98



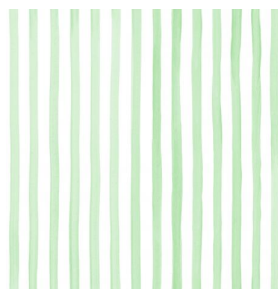
SONG Violine 105



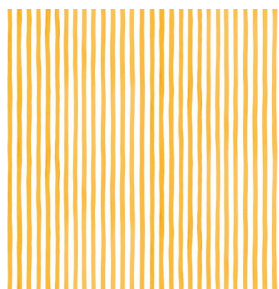
SONG Jade 116



SONG Sapin 126



SONG Tilleul 103



SONG maïs 37



(Headquarters) SOTEXPRO - 510 route de Montchal - 42360 PANISSIÈRES - FRANCE - +33 4 77 27 60 60
(Showroom) Le LAB' SOTEXPRO - 4 rue du Mail - 75002 PARIS - FRANCE

Non-contractual photos and colors - Indicative fitting - Fitting may vary depending on support selected