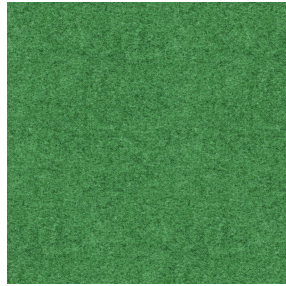




VELTEN BPI 00
Support d'impression



ELAINA Prairie 125
Motif d'impression



Visuel ne prenant pas en compte le support d'impression, le rendu final pouvant varier en fonction du support choisi.

Support d'impression **VELTEN BPI 00** Motif d'impression **ELAINA Prairie** **125**

support d'impression VELOURS enduction acrylique non classé au feu

Propriétés techniques

Applications Store bateau - Parois japonaises - Rideaux

Composition 100 % polyester/acrylique envers floqué blanc sans classement

Poids 390 g/m²

Laize 260 cm

Sens Sens normal

Raccord ↔ 0.0 cm ↓ 0.0 cm

Conseils d'entretien     

Label

Minimum commande 25 mètre(s) linéaire(s)

Caractéristiques techniques

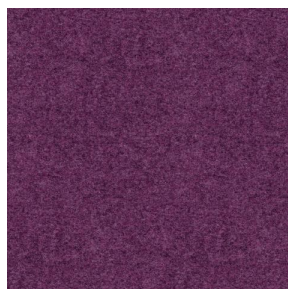
Résistance

Solidité lumière (unités Class/8)	4
Stabilité dimensionnelle (%)	
Chaîne	-1
Trame	0
Allongement rupture (mm)	
Chaîne	69
Trame	106
Résistance rupture (daN)	
Chaîne	52
Trame	41

Motif d'impression ELAINA



ELAINA Gris 91



ELAINA Violine 105



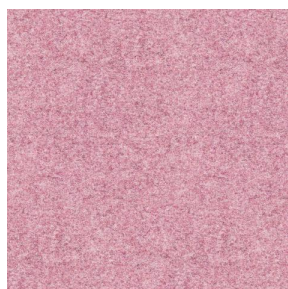
ELAINA Ocre 03



ELAINA Lin 11



ELAINA Bergamote 121



ELAINA Rose 129



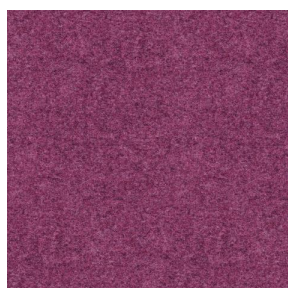
ELAINA Pacifique 54



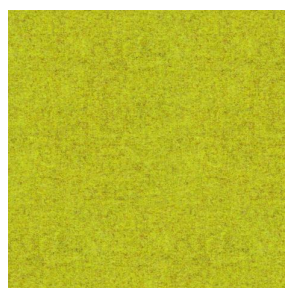
ELAINA Beige 63



ELAINA Céladon 135



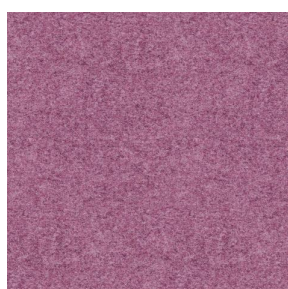
ELAINA Saphir 106



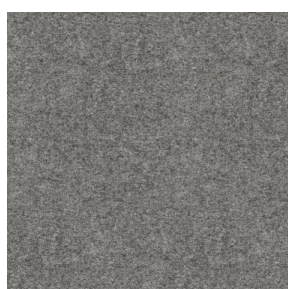
ELAINA Anis 62



ELAINA Rouge 21



ELAINA Hortensia 134



ELAINA Graphite 77



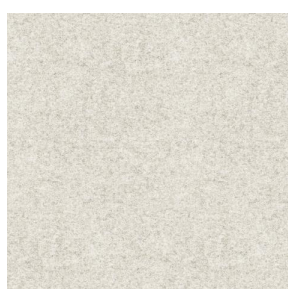
ELAINA Lierre 124



ELAINA Naturel 26



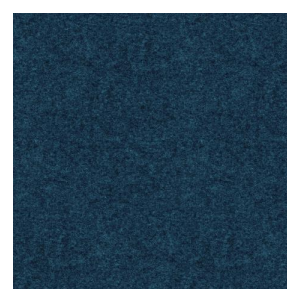
ELAINA Genêt 06



ELAINA Ivoire 115



ELAINA Gentiane 16



ELAINA Navy 120



(Headquarters) SOTEXPRO - 510 route de Montchal - 42360 PANISSIÈRES - FRANCE - +33 4 77 27 60 60
(Showroom) Le LAB' SOTEXPRO - 4 rue du Mail - 75002 PARIS - FRANCE

Non-contractual photos and colors - Indicative fitting - Fitting may vary depending on support selected

Motif d'impression ELAINA



ELAINA Chamois 111



ELAINA Turquoise 53



ELAINA Anthracite 38



ELAINA Fiesta 131



(Headquarters) SOTEXPRO - 510 route de Montchal - 42360 PANISSIÈRES - FRANCE - +33 4 77 27 60 60
(Showroom) Le LAB' SOTEXPRO - 4 rue du Mail - 75002 PARIS - FRANCE

Non-contractual photos and colors - Indicative fitting - Fitting may vary depending on support selected